

PART OF THE N.E. 1/4 OF SEC. 10, T.5N., R.1W., S.L.B. & M.

200

SPRING VALLEY SUBDIVISION

IN OGDEN CITY

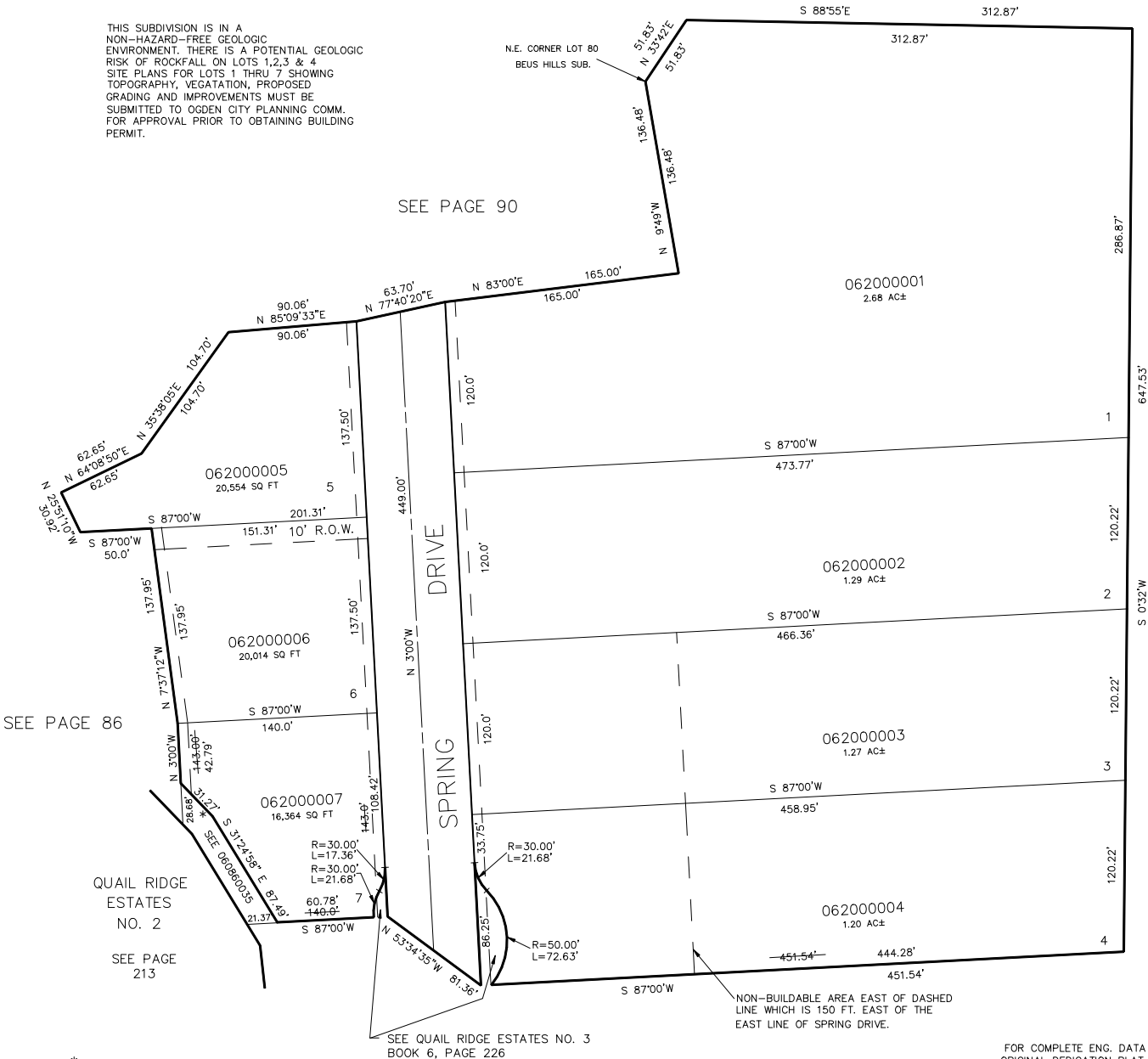
SCALE 1"=60'

TAXING UNIT: 25

SEE PAGE 86

THIS SUBDIVISION IS IN A NON-HAZARD-FREE GEOLOGIC ENVIRONMENT. THERE IS A POTENTIAL GEOLOGIC RISK OF ROCKFALL ON LOTS 1, 2, 3 & 4. SITE PLANS FOR LOTS 1 THRU 7 SHOWING TOPOGRAPHY, VEGETATION, PROPOSED GRADING AND IMPROVEMENTS MUST BE SUBMITTED TO OGDEN CITY PLANNING COMM. FOR APPROVAL PRIOR TO OBTAINING BUILDING PERMIT.

SEE PAGE 90



SEE PAGE 86

SEE PAGE 86

* PART OF LOT 7
SUB. & ESMT.
VACATED.
(BK 1656, PG. 658)

7' UTILITY EASEMENTS
INDICATED BY DASHED LINES.

SEE PAGE 86

FOR COMPLETE ENG. DATA SEE
ORIGINAL DEDICATION PLAT IN
BOOK 30, PAGE 37 OF RECORDS.